

Table Leg and Base Specifications

Concurrence

- > Base height is 27.75"
- > 7 gauge top plate
- > Aluminum extrusion (.090 wall thickness) construction with particle board support
- > 5" or 12"W individual bases
- > Cable access door optional on 12"W individual base
- > Levelers included

Disc Bases

- > Base height is 27.75", Bar Height is 40.75"
- > 7 gauge top plate
- > Bolted base - 3/8" plate steel
- > Vertical tubing is 3" or 4" tubing and 17 gauge or 14 gauge
- > Levelers (available on select part numbers) have 5/8" adjustment

Foundation Panel Bases

- > Base height is 27.75"
- > 3/4" double sided melamine construction, cam lock and doweled
- > Levelers included

Foundation Drum Bases

- > Base height is 27.75"
- > 1/4" BendiPly wrapping, 3/4" thick HPL construction
- > Levelers included

Gyration

Tubular Legs

- > Leg height is 27.75"
- > 7 gauge top plate
- > Fully welded construction
- > Vertical tubing is 1.5" diameter, 14 gauge
- > Levelers are 3/8-16.1"
- > Casters are 3" Nylon Twin Wheel with brake and all locking

Blade Legs

- > Leg height is 27.75"
- > 7 gauge top plate
- > Fully welded construction
- > Vertical tubing is 1.9" diameter, 14 gauge
- > Feet are made of .6" laser cut plate steel
- > Levelers are 3/8-16x1"
- > Casters are 3" Nylon Twin Wheel with brake and all locking
- > Flip tables lock in up (vertical) and down (horizontal) positions and have a die cast aluminum release handle

Impression

- > Leg height is 27.75"
- > 8 gauge foot and top plate
- Top plate sizes:
 - 6" x 6" – Straight Leg, 4-Post X-Base (qty. 4)
 - 6" x 8" – C, T, TT (qty. 2) Legs
 - 12" x 12" – X-Base
- > Vertical rectangular tubing is 3"x1.5", 14 gauge for all fixed legs
- > Vertical square tubing is 2.5"x2.5", 14 gauge for all fixed X bases and 1.5" x 1.5" for straight legs
- > 12 gauge crossbars on adjustable height legs
- > 20 gauge powerlex modesty
- > Levelers have 1" of adjustment
- > Casters are all locking
- > Flip tables lock in up (vertical) and down (horizontal) positions and have a die cast aluminum release handle
- > Optional Routing Holes are 2"W x 2.75"H

Lugano

- > Post-formed laminate cabinet
- > 11- and 14-gauge steel mitered, tapered plinth and top plate
- > Electric height-adjustable range is 30"-49.5"
- > Electric height-adjustable base supports 300 lbs.
- > Levelers included

Sawhorse

- > Leg height is 27.75"
- > Vertical rectangular tubing is 3"x1.5", 14 gauge
- > Levelers have 1" of adjustment
- > Square tubing is 1.5" x 1.5", 14 gauge
- > 7 gauge top plate

Sensation

- > Leg height is 27.75"
- > 7 gauge top plate
- Top plate sizes:
 - 6" x 6" – Straight Leg, 4-Post X-Base (qty. 4)
 - 6" x 8" – C, T, TT (qty. 2), Y Legs, Split Y-Leg Bases
 - 9.5" x 9.5" – LMXA/LMXB X-Bases
 - 12" x 12" – LMXC/LMXD X-Bases, LMYB Y-Leg Bases
- > Pin set adjustable height is 24.75"-33.75"
- > Welded column, bolted feet construction
- > Feet are made of die cast aluminum
- > Vertical tubing is 2.36" diameter, 14 gauge
- > Levelers are 3/8-16x1"
- > Casters are 3" Nylon Twin Wheel with brake and all locking
- > Flip tables lock in up (vertical) and down (horizontal) positions and have a die cast aluminum release handle
- > Optional Routing Holes are 1.5" diameter.

Solano (formerly *Captiva*)

- > Leg height is 27.75"
- > 7 gauge steel foot
- > 8 gauge steel top plate
- Top plate sizes:
 - 6" x 6" – Straight Leg, 4-Post X-Base (qty. 4)
 - 6" x 8" – C, T, TT (qty. 2) Legs
 - 12" x 12" – X-Base
- > Vertical rectangular tubing is 3" x 1.5", 14 gauge for all fixed legs
- > Vertical square tubing is 2.5" x 2.5", 14 gauge for all fixed X bases and 1.5" x 1.5" for straight legs
- > 12 gauge crossbars on adjustable height legs
- > 20 gauge powerlex modesty
- > Levelers have 1" of adjustment
- > Casters are all locking
- > Flip tables lock in up (vertical) and down (horizontal) positions and have a die cast aluminum release handle
- > Optional Routing Holes are 2"W x 2.75"H

Solano Fast Crank

- > Height range is 26" - 44" (including top)
- > Lifts 110 lbs when moving, 210 lbs when static (load capacity includes weight of worksurface)
- > Requires approximately two turns per inch

Square Bases

- > Base height is 27.75", Bar Height is 40.75"
- > 7 gauge top plate
- > Bolted base - 3/8" plate steel
- > Vertical tubing is 3" or 4" tubing and 17 gauge or 14 gauge
- > Levelers (available on select part numbers) have 5/8" adjustment

Stealth

- > Base height is 27.75"
- > Aluminum extrusion (.090 wall thickness) construction with particle board support
- > Levelers included
- > 7 gauge top plate

Value

- > Leg height is 27.75"
- > 7 gauge top plate
- > Fully welded construction
- > Vertical tubing is 1.9" diameter, 14 gauge
- > Horizontal feet are 1.9" diameter tubing, 14 gauge
- > Levelers are 3/8-16x1.375"
- > Casters are 2" Nylon Twin Wheel with brake and all locking
- > Flip tables lock in up (vertical) and down (horizontal) positions and have a die cast aluminum release handle

TOPS

BASES

POWER
DATASUPPORT
FURNITURE

ACCESSORIES

TABLES STEP 1 - TOPS

Top (Worksurface) Specifications

General Information on Wood Cores

- > Passes all NEMA and BIFMA tests for high pressure laminate worksurfaces.
- > Core material is 1.125" thick, M3 rated (45 lb.) furniture grade particleboard.
- > FSC Mixed Sources accreditation.
- > ISO 14001 certification for wood cores.
- > Made from 30% post-consumer and 70% pre-consumer recycled content.
- > Eco-Certified Composite Grademark Program (ECC) certified by Composite Panel Association (CPA).
- > CARB Phase 2 compliant for formaldehyde emissions less than 0.09ppm.
- > Adhesives are solvent free water based PVA (poly vinyl acetate).
- > Formaldehyde-free cores are available via special quote at quotes@enwork.com.
- > Tables have a 200 pound load capacity (functional load).

Standard Laminates

- > HPL (high pressure laminate) construction, .030" or .050" thick depending on color.
- > Backer is moisture-resistant phenolic material for balanced construction.
- > Laminates and backers are Greenguard certified for Indoor Air Quality.
- > PVC (default) or ABS (upon request) edge choices in 3mm, and Knife.
- > Other edge choices include Veneer and Solid Wood.

Contour Laminates

- > Commonly known as Rigid Thermofoil (RTF).
- > Contour Laminate is high performance, with comparable durability to HPL laminate.
- > The taper edge is seamless with no visible edgeband or t-molds, offering an inherent anti-microbial sealed surface.

Woods

- > Natural veneers are used in Maple, Cherry, and Walnut species.
- > Two and three piece tops use full-cut slip-matched veneers.
- > Edge choices in 3mm (wood), Taper (solid wood), Knife (wood), Bullnose (solid wood) and Ultra (solid wood).

Designer Finish Top Specifications

Back-Painted Glass

- > 3/8" thick, annealed, flat-polished low iron. Available as clear glass (B) or satin-etched/frosted glass (D). 1-1/8" knife edge MDF substrate painted to match. Bright white as standard. Any Benjamin Moore color available upon request. \$2000 list custom color fee applies for orders of less than 250 sq. ft. There is also a 20% upcharge to each top's list price for custom colors. Actual depth of 60"D tops is 59" due to yield.

KrystalCast®

- > Acrylic on MDF or birch ply is available in any Benjamin Moore color. Super White is by far the most popular. See www.KrystalCast.com for technical specs and care instructions.

Solid Surface (Wilsonart)

- > Designer White as standard. See <http://wilsonart.com/commercial/solid-surfaces/designs> for additional finish/color choices. Price varies by finish/color, contact quotes@enwork.com with your preferred selection.

Quartz (Cambria)

- > See www.cambriausa.com for finish/color choices. 13/16" thick. Undersized 1-1/8" knife edge substrate painted black. Due to sheet size availability, some 60"D (only) tops come in twice the quantity of pieces. (For example, a top that normally comes in 3 pieces will come in 6 pieces.)

Tip: Due to the extra weight, Quartz conference table tops are only recommended for use on Concurrence, Stealth, and Foundation (with trough) table bases.

Birch Ply Edges

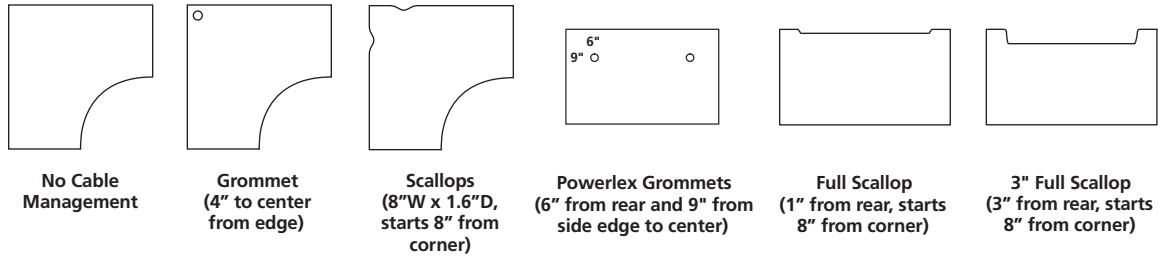
- > Edge is clear coated when specified with laminate and stained-to-match when sold with veneer. Actual width of 96"W is 95". Actual width of 192"W is 190" due to yield.

TOPS	TABLES STEP 1 - TOPS
BASES	
POWER DATA	
SUPPORT FURNITURE	
ACCESSORIES	

Enwork Product Information

TOPS	TABLES STEP 1 - TOPS
BASES	
POWER DATA	
SUPPORT FURNITURE	
ACCESSORIES	

Cable Management Solutions are offered in a variety of styles. The following options are available:



Edge and Grommet Finish Defaults

Enwork offers the following HPL laminate finishes with default edge colors:

Laminate Name	Finish Letter	3mm/Knife Edge Color	Grommet Color	Knife Edge Undercut Color
Wilsonart Kensington Maple (10776-60)	A	Kensington Maple	Grey	Clear
Wilsonart Monticello Maple (7925-38)	B	Monticello Maple	Grey	Clear
Wilsonart Wild Cherry (7054-60)	C	Wild Cherry	Black	Clear
Wilsonart Fashion Grey (D381-60)	E	Fashion Grey	Grey	Clear
Wilsonart White Tigris (4783-60)	F	Medium Grey	Grey	Clear
Wilsonart Cafelle (7933K-07)	G	Cafelle	Black	Clear
Wilsonart Frosty White (1573-60)	M	Frosty White	White	Clear
Wilsonart Slate Grey (D91-60)	P	Slate Grey	Grey	Clear
Wilsonart Black (1595-60)	R	Black	Black	Clear
Wilsonart Brazilwood (7946-38)	U	Brazilwood	Grey	Clear
Wilsonart River Cherry (7937-38)	V	River Cherry	Grey	Clear
Wilsonart Designer White (D354-60)	W	Designer White	White	Clear
Formica Neutral Twill (8826-58)	3	Neutral Twill	Grey	Clear
Formica Bleached Legno (8845-58)	4	Bleached Legno	Grey	Clear
Formica Prestige Walnut (6209-43)	5	Prestige Walnut	Black	Clear
Formica Select Cherry (7759-43)	7	Select Cherry	Black	Clear

Tip: Contour Laminate default grommet colors are as follows: Natural Maple (Grey), Designer White (Grey), Hayward Cherry (Black), Studio White (Grey), Urban Walnut (Black), River Cherry (Grey).

Tip: Veneer default grommet color is black. Laminate with veneer edge grommet color defaults to the laminate.

Tip: Additional 3mm edge colors can be used. For availability and pricing, email quotes@enwork.com.

Tip: When specifying a special laminate, please freeform a standard edge color on order. If a non-standard edge is needed, contact quotes@enwork.com for availability and pricing.

Paint Finishes

Enwork offers the following paint colors:

Paint/Name	Finish Letter
Black	R
Slate Grey	G
Silver	S
Medium Tone	T
Arctic White (textured)	W

Some Steelcase, Herman Miller, Knoll, Haworth, and Allsteel paints are available for a \$350 List fee per order. Call/email for availability of specific colors. Additional custom paints (e.g. Tiger Dry Lac) must be quoted through quotes@enwork.com.

Enwork Finishes

S = Standard
U = Upcharge

	Tables						
	Tops	Solano CT-Series	Gyration 2.0	Legs and Bases (except Solano and Gyration 2.0), Modesty	Affinity	Apex	Grid
Fabrics							
Ped Cushions - Camira Era and the Mill Collection						S	S
Tackboards/Grid - Camira Mill L2 and Lucia				S		S	
For Pixley fabric information, see page 364							
For Seating fabric & mesh information, see pages 346-369							
Top Laminates							
Wilsonart Kensington Maple (10776-60 Matte Finish)	S				S	S	S
Wilsonart Monticello Maple (7925-38 Matte Finish)	S				S	S	S
Wilsonart Wild Cherry (7054-60 Matte Finish)	S				S	S	S
Wilsonart Fashion Grey (D381-60 Matte Finish)	S				S	S	S
Wilsonart White Tigris (4783-60 Matte Finish)	S				S	S	S
Wilsonart Cafelle (7933K-07)	S				S	S	S
Wilsonart Black (1595-60)	S				S	S	S
Wilsonart Frosty White (1573-60)	S				S	S	S
Wilsonart Designer White (D354-60 Matte Finish)	S				S	S	S
Wilsonart River Cherry (7937-38 Matte Finish)	S				S	S	S
Wilsonart Slate Grey (D91-60)	S				S	S	S
Wilsonart Brazilwood (7946-38)	S				S	S	S
Formica Neutral Twill (8826-58, Matte Finish)	S				S	S	S
Formica Bleached Legno (8845-58, Matte Finish)	S				S	S	S
Formica Prestige Walnut (6209-43 Artisan Collection)	S				S	S	S
Formica Select Cherry (7759-43, Artisan Collection)	S				S	S	S
Top Laminates, Contour							
Natural Maple	S						S
Hayward Cherry	S						S
Studio White Matrix	S						S
Designer White	S						S
Urban Walnut	S						S
River Cherry	S						S
Top and Casegoods Veneers							
Maple	S			S			
Cherry	S			S			
Walnut	S			S			
Laminate Casegoods							
Wilsonart Kensington Maple (10776-60)				S	S		S
Wilsonart Monticello Maple (7925-38)				S	S		S
Wilsonart Wild Cherry (7054-60)				S	S		S
Wilsonart Fashion Grey (D381-60)				S	S		S
Wilsonart Cafelle (7933K-07)				S	S		S
Wilsonart Black (1595-60)				S	S		S
Wilsonart Frosty White (1573-60)				S	S		S
Wilsonart Designer White (D354-60)				S	S		S
Wilsonart River Cherry (7937-38)				S	S		S
Wilsonart Slate Grey (D91-60)				S	S		S
Wilsonart Brazilwood (7946-38)				S	S		S
Formica Bleached Legno (8845-58)				S	S		S
Formica Neutral Twill (8826-58, Matte Finish)				S	S		S
Formica Prestige Walnut (6209-43)				S	S		S
Formica Select Cherry (7759-43)				S	S		S
Paints							
Black			U	S	S	S	S
Slate Grey			U	S	S	S	S
Silver		S	S	S	S	S	S
Medium Tone			U	S	S	S	S
Arctic White (textured)		S	U	S	S	S	S

Enwork Supports and Bracing

Worksurface (Top) Support and Bracing Rules

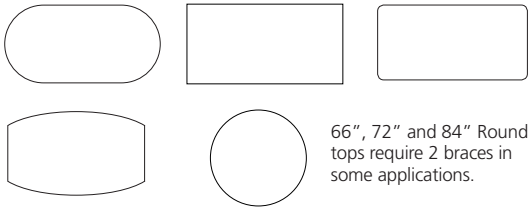
- > **Conference and training table tops 60" wide and wider come with support braces (NWBRACE) at no charge, if required. See page 24 for a list of how many braces are included per top.**
- > **Grid worksurfaces do not include braces due to unknown applications (peds, lats, etc.).** Standard laminate worksurface (NWBRACE) support is required on unsupported spans 54"W and wider. Supports can be fixed peds, legs, or braces.
- > **The maximum allowable span between legs or supports is 72" - even with braces.**
- > As an alternate to braces, legs may be inset from table ends.
- > All 30"D tops 72"W or wider, as well as tops 36"D or deeper and 60"W or wider, require two braces instead of one. Braces are included automatically on all conference and table tops, if required.
- > Foundation Panel Base Trough Kits, Stealth, Lugano, and Concurrence conference tables are designed with support and don't utilize stand-alone (NWBRACE) braces.

TOPS	TABLES STEP 1 - TOPS
BASES	
POWER DATA	
SUPPORT FURNITURE	
ACCESSORIES	

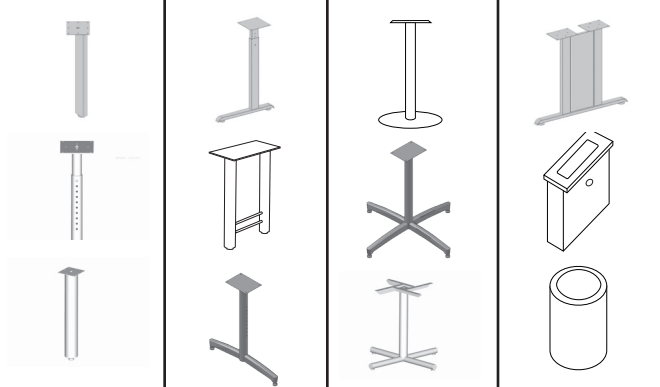
Any Top - Any Base

Any Top

Any Base



66", 72" and 84" Round tops require 2 braces in some applications.

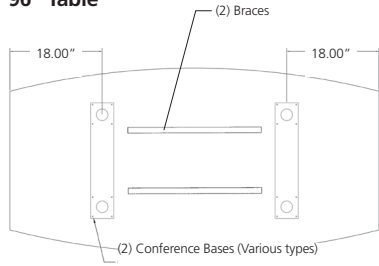


	Depth	Width	Number of Straight Legs	Number of T/C/H Legs	Number of X/Disc Bases	Number of Conf. Bases	Number of Braces
	18/24/30	30	4	2	1	n/a	0
	18/24/30	36	4	2	1	n/a	0
	18/24/30	42	4	2	1	n/a	0
	18/24/30	48	4	2	2	n/a	0
	18/24/30	54	4	2	2	n/a	0
	18/24/30	60	4	2	2	n/a	1
	18/24/30	66	4	2	2	n/a	1
	18/24/30	72	4	2	2	n/a	1
Worksurfaces longer than 72" must have a third leg in the middle or legs must be inset to a maximum span of 72".	18/24/30	78	4 or 6	2* or 3	2*	n/a	1
	18/24/30	84	4* or 6	2* or 3	2*	n/a	1
	18/24/30	90	4* or 6	2* or 3	2*	n/a	1
	18/24/30	96	4* or 6	2* or 3	2*	n/a	1
	36/42	36	4	2	1	n/a	0
	36/42	42	4	2	1	n/a	0
	36/42	48	4	2	1	n/a	0
	36/42	54	4	2	2	n/a	0
	36/42	60	4	2	2	n/a	2
	36/42	66	4	2	2	n/a	2
	36/42	72	4	2	2	n/a	2
	36/42	78	4* or 6	2* or 3	2*	2*	2
	36/42	84	4* or 6	2* or 3	2*	2*	2
	36/42	90	4* or 6	2* or 3	2*	2*	2
	36/42	96	4* or 6	2* or 3	2*	2*	2
	48	48	4	2	1	2	0
	48	54	4	2	2	2	0
	48	60	4	2	2	2	2
	48	66	4	2	2	2	2
	48	72	4	2	2	2	2
	48	78	4* or 6	2* or 3	2*	2*	2
	48	84	4* or 6	2* or 3	2*	2*	2
	48	90	4* or 6	2* or 3	2*	2*	2
See page 23 and 25 for more information.	48/60	96	4* or 6	2* or 3	2	2**	2
	48/60	108	6**	3**	3**	3**	0
	48/60	120	6**	3**	3**	3**	0
	48/60	132	6**	3**	3**	3**	0
	48/60	144	6**	3**	3**	3**	0
	48/60	156	6**	3**	3**	3**	0
	48/60	168	6**	3**	3**	3**	4
	48/60	180	6**	3**	3**	3**	4
	48/60	192	6**	3**	3**	3**	4
	48/60	204	8**	4**	4**	4**	0
	48/60	216	8**	4**	4**	4**	0
	48/60	228	8**	4**	4**	4**	6
48/60	240	8**	4**	4**	4**	6	

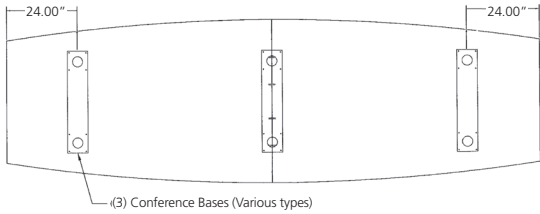
Base Locations

Foundation, Statement Individual Panel Base Location

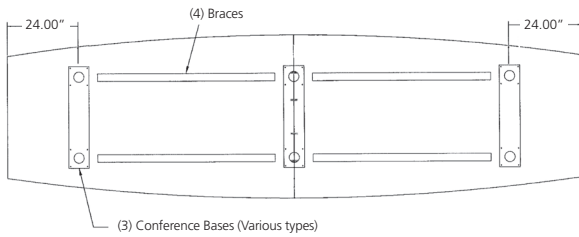
96" Table



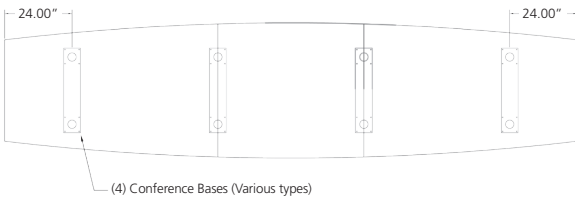
108"-156" Table



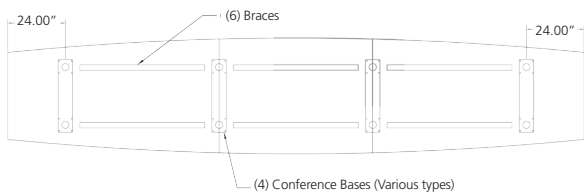
168"-192" Table



204"-216" Table

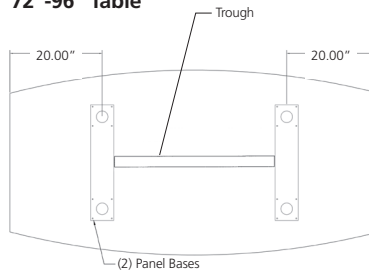


228"-240" Table

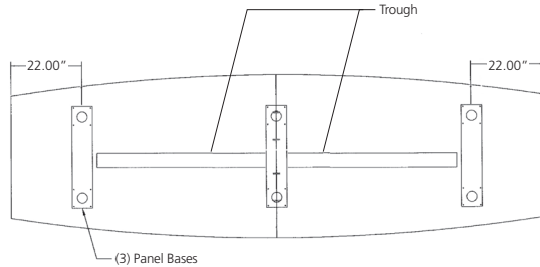


Foundation Panel Base and Trough Kits

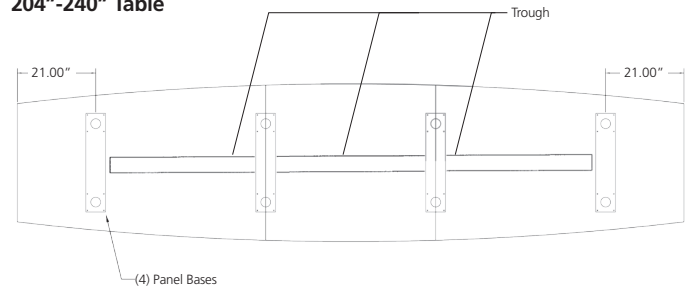
72"-96" Table



108"-192" Table

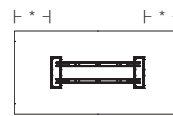


204"-240" Table

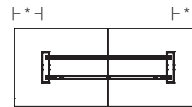


Concurrence and Stealth Base and Trough Tables

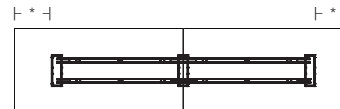
72"-96" Table



108"-168" Table



180"-192" Table



204"-240" Table

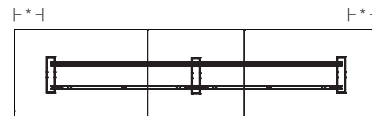
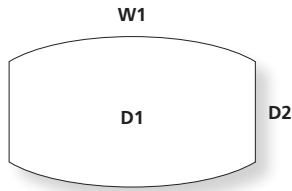


Table Width	Overhang*	
	Concurrence	Stealth
72	16.4"	15.375"
84	16.4"	15.375"
96	16.4"	15.375"
108	22.4"	21.375"
120	22.4"	21.375"
132	22.4"	21.375"
144	22.4"	21.375"
156	22.4"	21.375"
168	22.4"	21.375"
180	22.4"	21.375"
192	22.4"	21.375"
204	22.4"	21.375"
216	22.4"	21.375"
228	22.4"	21.375"
240	22.4"	21.375"

TOPS
BASES
POWER DATA
SUPPORT FURNITURE
ACCESSORIES

TABLES STEP 1 - TOPS

Boat, Ellipse, and Racetrack Table Individual Base "Depth" Recommendations



Ordering Information:

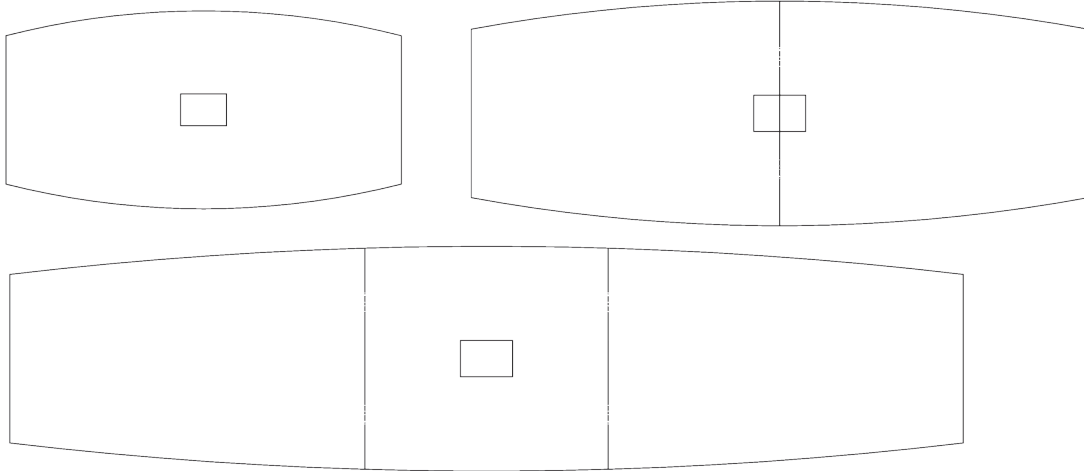
- > All bases must be the same depth when using Concurrence Individual Bases with beams.
- > Concurrence and Stealth Base and Trough Kits for 36" and 42" D conference rectangle tops do not fit 36" and 42" D Boat, Ellipse, or Capsule tops because of the tapered ends.
- > Foundation Base Kits are available for 36" and 42" D rectangle tops but not 36" and 42" Boat, Ellipse, or Capsule tops because of the tapered ends.

D1	D2	W1	Individual Panel Base Depth Recommendation for Boat Tables						Total Bases	Knee space Between Bases	
			18"	24"	36"	6"	10"				
36	24	72	2	+	0	+	0	2	*30	*26	
36	24	84	2	+	0	+	0	2	*42	*38	
36	24	96	2	+	0	+	0	2	42	38	
42	30	72	2	+	0	+	0	2	*30	*26	
42	30	84	2	+	0	+	0	2	*42	*38	
42	30	96	2	+	0	+	0	2	42	38	
48	36	72	0	+	2	+	0	2	*30	*26	
48	36	84	0	+	2	+	0	2	*42	*38	
48	36	96	0	+	2	+	0	2	42	38	
48	36	108	2	+	1	+	0	3	24	20	
48	36	120	2	+	1	+	0	3	30	26	
48	36	132	2	+	1	+	0	3	36	32	
48	36	144	2	+	1	+	0	3	42	38	
48	36	156	2	+	1	+	0	3	48	44	
48	36	168	2	+	1	+	0	3	54	50	
48	36	180	2	+	1	+	0	3	*42	*38	
48	36	192	2	+	1	+	0	3	*46	*42	
48	36	204	2	+	2	+	0	4	46	42	
48	36	216	2	+	2	+	0	4	50	46	
48	36	228	2	+	2	+	0	4	54	50	
48	36	240	2	+	2	+	0	4	58	54	
60	48	96	0	+	2	+	0	2	42	38	
60	48	108	0	+	2	+	1	3	24	2	
60	48	120	0	+	2	+	1	3	30	26	
60	48	132	0	+	2	+	1	3	36	32	
60	48	144	0	+	2	+	1	3	42	38	
60	48	156	0	+	2	+	1	3	48	44	
60	48	168	0	+	2	+	1	3	54	50	
60	48	180	0	+	2	+	1	3	*42	*38	
60	48	192	0	+	2	+	1	3	*46	*42	
60	48	204	0	+	2	+	2	4	46	42	
60	48	216	0	+	2	+	2	4	50	46	
60	48	228	0	+	2	+	2	4	54	50	
60	48	240	0	+	2	+	2	4	58	54	

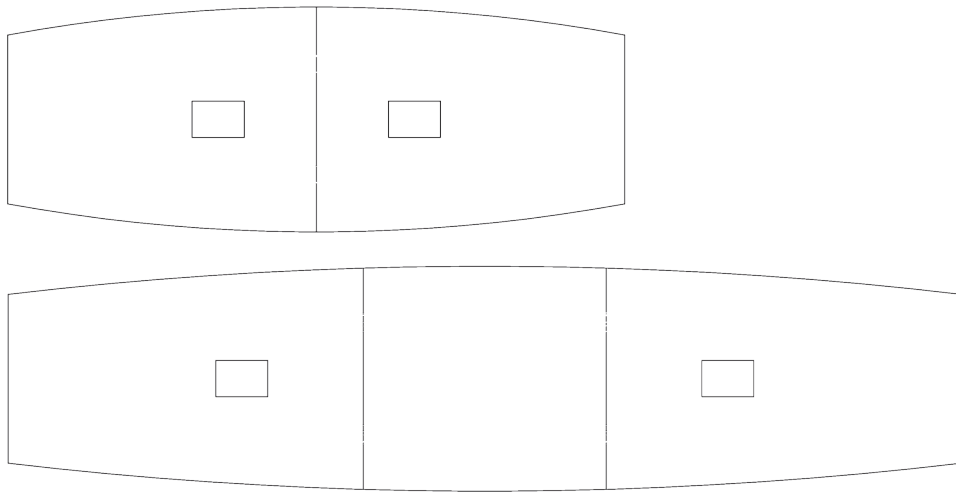
*These individual bases are set in 18" to center from end of table, all others are 24" to center from end of table.

Conference Table Power/Data Standard Cut-outs

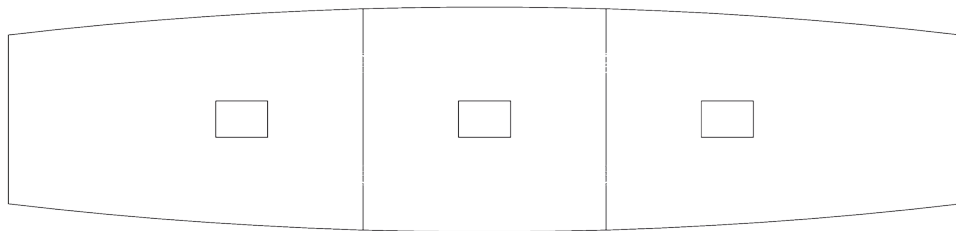
Centered (Qty. 1)



Between Bases (Qty. 2)



Between Bases (Qty. 3)



TOPS	TABLES STEP 1 - TOPS
BASES	
POWER DATA	
SUPPORT FURNITURE	
ACCESSORIES	