

Me!™

Multi-Purpose Chairs

*Typically ships in 48 hours*



# Me!™

## Multi-Purpose Chairs

Typically ships in 48 hours



Me! Flip Nest



Me! Guest

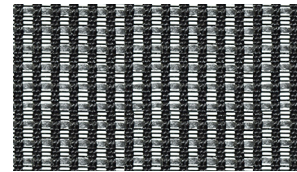
The Me! collection offers the ultimate scalability with four task chair models, a stool, a 4-leg guest chair, and a mobile nesting chair. If consistent aesthetic is important to your customer, Me! is the right place to start.

The Me! Nesting chair is perfect for training spaces and multi-purpose rooms. With a height-adjustable ratchet back and a waterfall style upholstered seat, the Me! nesting chair provides all-day comfort.

The Me! Guest chairs are a great compliment for private offices, lobbies, and general reception areas. Finished undersurface seat cover allows the chair to stack up to 4 high without creating significant imprints on the seats underneath.

### Features

	Me! Guest	Me! Flip Nest
Black mesh back	•	•
Ratchet adjustable height back	•	•
Molded foam waterfall style seat w/ (black) Camira Era: Forward upholstery	•	•
Flip-up seat for easy nesting		•
Stacks 4 high	•	
Black steel frame with powder coat finish	•	•
Non-marring nylon floor glides	•	
50mm nylon dual wheel, dual surface casters		•
Packaged 2 chairs per carton	•	•



Back Mesh Pattern  
Sized approximate to actual scale

### Dimensions

	Me! Guest	Me! Flip Nest
Overall	37-1/2"H x 24"W x 24"D	38"H x 23-3/4"W x 24"D
Seat height	19"	19"
Seat depth	18"	19"
Seat width	18-1/4"	18-1/4"
Back height from seat	20"	21"
Distance between arms	20"	20"
Cartoned chair weight	45 lbs (2 chairs)	63 lbs (2 chairs)
Carton size	24-1/2" x 35-1/2" x 14"	27-3/4" x 27-3/4" x 26-1/2"
Nested, back of chair 1 to front of chair 2	n/a	28"

### Part Numbers

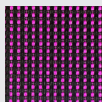
MENEST	Me! Flip Seat Nesting Chair
MEGG	Me! Stackable Guest Chair

### Additional Back Mesh Options Available

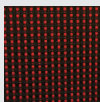
10-12 week lead time — 50 unit minimum



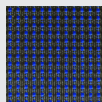
Grass



Magenta



Red



Sea Blue



Tangerine

