

Me!™

Mid Back Stool
Typically ships in 48 hours



Me!™

Mid Back Stool

Typically ships in 48 hours

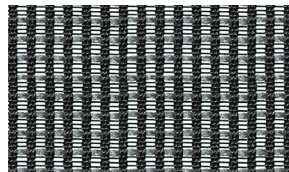


The Me! collection offers the ultimate scalability with four task chair models, a stool, a 4-leg guest chair, and a mobile nesting chair. If consistent aesthetic is important to your customer, Me! is the right place to start.

The Me! Stool pairs well with standing-height and height-adjustable tables. Its height-adjustable back and arms assures a variety of users will appreciate its comfort as well as its style.

Features

- Black mesh back with ratchet height adjustment
- Molded foam waterfall style seat w/ (black) Camira Era: Forward upholstery
- 1 Paddle swivel mechanism
- Pneumatic seat height adjustment approximately 24-33"H
- Height and width adjustable arms, w/ telescoping arm pads
- 21" foot ring with black powder coat finish
- 27" diameter nylon 5-star base
- 50mm polyurethane dual wheel, dual surface casters



Back Mesh Pattern
Sized approximate to actual scale

Dimensions

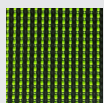
Overall	41-5/8 to 49"H x 26-1/2"W x 23-1/2"D
Seat height range	24" to 29"
Seat depth	19"
Seat width	21"
Back height from seat	19-1/4" to 22"
Distance between arms	19" to 20-1/4"
Arm height from seat	6-1/4" to 8-1/2"
Cartoned chair weight	57-1/2 lbs
Carton size	26" x 26-1/2" x 15"

Part Numbers

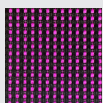
MESTOOL Me! Mid Back Stool

Additional Back Mesh Options Available

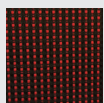
10-12 week lead time — 50 unit minimum



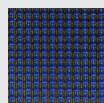
Grass



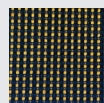
Magenta



Red



Sea Blue



Tangerine



Back Height
Slide ratchet frame up or down to adjust back height

Arm Height & Width
Push button to move arm up or down; loosen knob under arm to adjust width, tighten to secure position; arm caps slide forward & backward

Seat Height
Pull up on lever to activate pneumatic cylinder