

Era - Product information

Era is a subtle, two tone polyester fabric containing stretch in both directions for ease of upholstery. The baby herringbone weave offers an understated contemporary texture while its coloring technique provides close up intrigue. The palette incorporates playful brights and sophisticated muted tones.

Era meets the ACT voluntary Performance Guidelines and is classified for Heavy Duty Upholstery.



Technical information

Composition

100% Polyester.

Width

54 inches minimum

Weight

9^{1/2} oz/sq yd ±5% (14^{1/4} oz/lin yd ±5%)

Abrasion Resistance*

ASTM D4157 Wyzenbeek ≥100,000 double rubs

Flammability

California Technical Bulletin 117 - 2013

NFPA 260 + UFAC Class 1

BS 7176 Low Hazard

ASTM E84 Class 1 or A (adhered)

ASTM E84 Class 1 or A (un-adhered)

Note: Flammability performance is dependent on components used.

Colorfastness to light

AATCC-16 (40 hours) Class 4

Color fastness to crocking

AATCC-8 (Dry: 4, Wet: 3)

Cleaning Code

W/S

Water-based cleaning agent or solvent: Depending on the stain, you can use a dry-cleaning solvent, the foam of a mild detergent, or upholstery shampoo.

*Why go round in circles with numbers? Camira recognizes that the number of Wyzenbeek double rubs do not reflect the actual wear performance of fabrics. This product is externally certified, details of which are on our website and available from our customer services team.

Multiple factors affect fabric durability and appearance retention, including end-user application and correct maintenance. Wyzenbeek results above 100,000 double rubs have not been shown to be a reliable indicator of increased fabric lifespan.

Batch to batch variations in shade may occur within commercial tolerances. We reserve the right to alter technical specifications without notice. The Unregistered Design Rights and the Copyright in all designs are the exclusive property of Camira Fabrics Limited.

 Enwork

Come in. Be inspired.SM

www.enwork.com

Era



Task seating



Lounge seating



Panels

by **camira**



Generation
CSE02



History
CSE21



Cycle
CSE06



Phase
CSE17



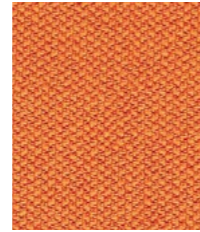
Prime
CSE09



Futurist
CSE01



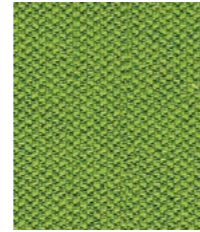
Lifetime
CSE03



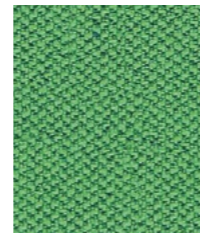
Span
CSE05



Period
CSE07



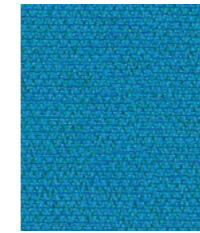
Timelapse
CSE16



Event
CSE18



Aeon
CSE20



Everlasting
CSE10



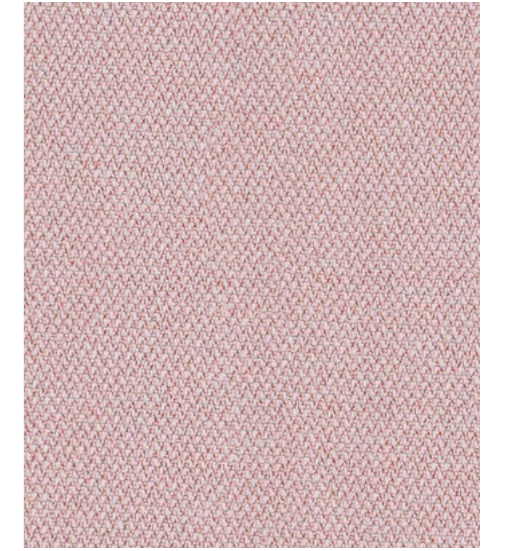
Stage
CSE15



Chapter
CSE08



Perennial
CSE12



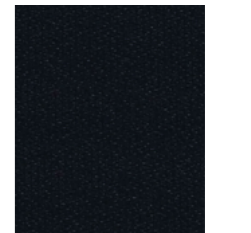
Calendar
CSE19



Forecast
CSE11



Present
CSE13



Forward
CSE14